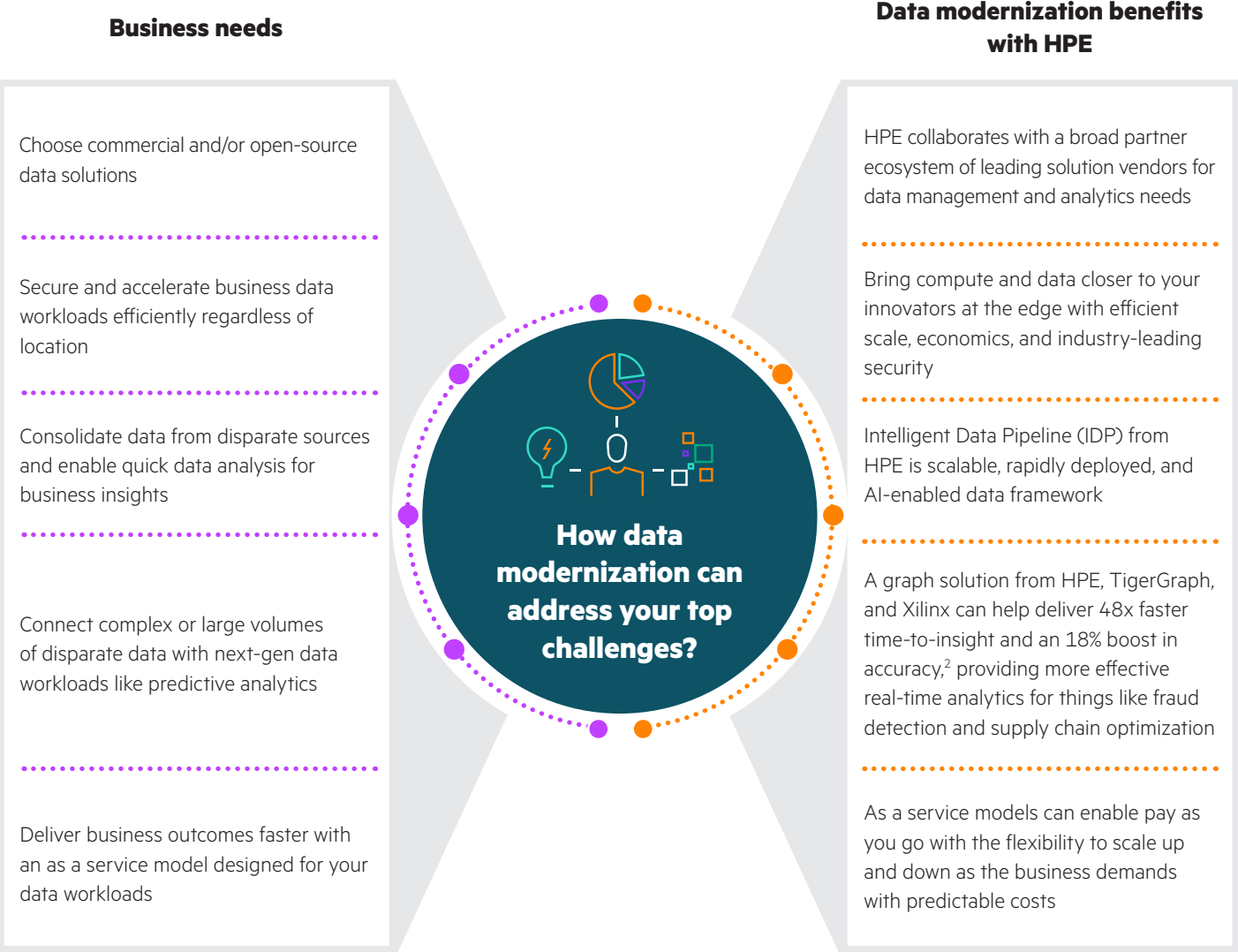


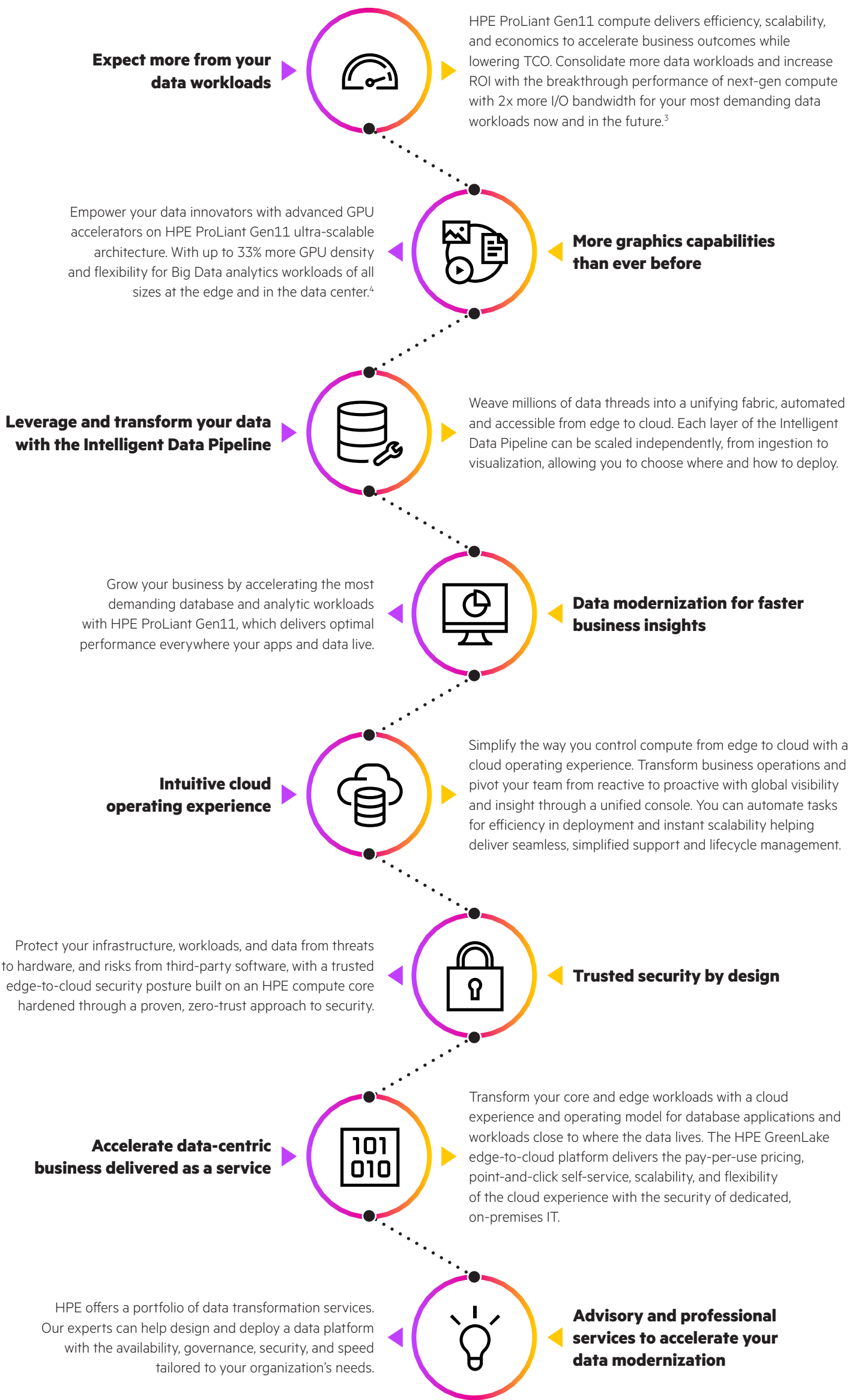
# How HPE ProLiant can help transform data management and accelerate business outcomes with data analytics

Data is growing faster than most organizations can manage. In 2025, data growth is expected to be more than 200 zettabytes.<sup>1</sup> Fifty-seven percent of recently surveyed business leaders say their business can't keep up with this volume and realize they're not ready for the future. Game-changing insights for innovations, services, and security measures lie within this data, but can only be realized if the data is connected and tamed for analysis. This means weaving millions of threads of data into a unifying fabric, automated and accessible from edge to cloud.



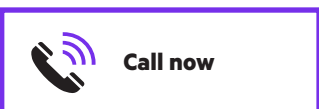
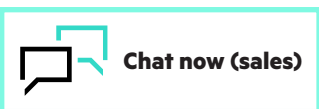
## Top reasons to choose HPE ProLiant Gen11 for data modernization

HPE ProLiant is engineered for a hybrid world to meet the demand for data-first modernization. Your data is your source of business value. It's created constantly, across the enterprise, and it contains the insights that fuel innovation and competitive advantage. Realizing that value, however, requires compute to power analytics that brings key perspectives to light and the workloads for the benefit of the business and your customers.



**Find out how HPE ProLiant Gen11 can deliver purpose-built data solutions that help organize and extract value from their data and drive business outcomes.**

Make the right purchase decision. Contact our presales specialists.



### Learn more at

[hpe.com/us/en/servers/proliant-workload-solutions-ecosystem.html](https://hpe.com/us/en/servers/proliant-workload-solutions-ecosystem.html)



<sup>1</sup> [techjury.net/blog/how-much-data-is-created-every-day/#gref](https://techjury.net/blog/how-much-data-is-created-every-day/#gref)

<sup>2</sup> [tigergraph.com/press-article/hpe-xilinx-hardware-graph/](https://tigergraph.com/press-article/hpe-xilinx-hardware-graph/)

<sup>3</sup> Compared to HPE ProLiant Gen10 Plus servers

<sup>4</sup> Comparison of HPE ProLiant DL385 Gen11 with four double-wide GPUs to HPE ProLiant DL385 Gen10 Plus with three double-wide GPUs